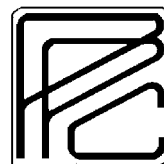


The Pinellas Planning Council's  
Annual Report for Fiscal Year 1998-99



---

## YOUR PINELLAS PLANNING COUNCIL REPRESENTATIVES

---

Chairman



Councilmember  
Robert A. Kersteen  
City of St. Petersburg

Vice-Chairman



Mayor  
Thomas DeCesare  
Group A  
Communities

Treasurer



Councilmember  
Chuck Williams  
City of Pinellas Park

Secretary



Commissioner  
Nadine Nickeson  
City of Safety Harbor



School Board Member  
Lee Benjamin  
Pinellas County  
School District



Mayor  
Frank DiDonato, DC  
City of Tarpon  
Springs



Mayor  
Robert DiNicola  
Group B  
Communities



Commissioner  
Ed Hart  
City of Clearwater



Commissioner  
Janet Henderson  
City of Dunedin



Vice-Mayor  
Robert Jackson  
City of Largo



Commissioner  
Karen Williams Seel  
Pinellas County



Vice-Mayor  
William B. Smith  
Group C  
Communities



Councilmember  
Babe Wright  
City of Oldsmar

Group A Communities: Madeira Beach, St. Pete Beach, and Treasure Island

Group B Communities: Belleair Shore, Belleair Beach, Indian Rocks Beach, Indian Shores, North Redington Beach, Redington Beach, and Redington Shores

Group C Communities: Belleair, Belleair Bluffs, Gulfport, Kenneth City, Seminole, and South Pasadena



### PINELLAS PLANNING COUNCIL

This has been an exciting and productive year for the Planning Council.

The Council completed extensive work for several local governments in meeting the State required Evaluation and Appraisal Report (EAR) plan update process; while continuing to provide technical assistance to many of our smaller local governments to meet their planning needs.

We also completed and were recognized with an award of excellence for our Model Local Intergovernmental Coordination Element (ICE); formulated and approved amendments to the Countywide Plan Rules in response to changing economic and land use characteristics; processed numerous Countywide Plan Map amendments; and continued to work on a more comprehensive solution to annexation issues.

Perhaps most significant of all, the Council embarked on a strategic planning exercise, with the participation of the Board of County Commissioners, that included a careful reexamination of our mission and role. The resulting Strategic Plan approved in July of this year identified specific goals, objectives and action plans which in turn, served as the foundation for a comprehensive update of the Council's five-year work program.

The Strategic Plan has pointed to a new direction for the Council that will guide the specific tasks and priorities of the Council in the years ahead.

It has been my privilege to serve as Council Chairman this past year and I appreciate the support of all concerned in making the Council a productive force for intergovernmental cooperation in Pinellas County.

Sincerely,

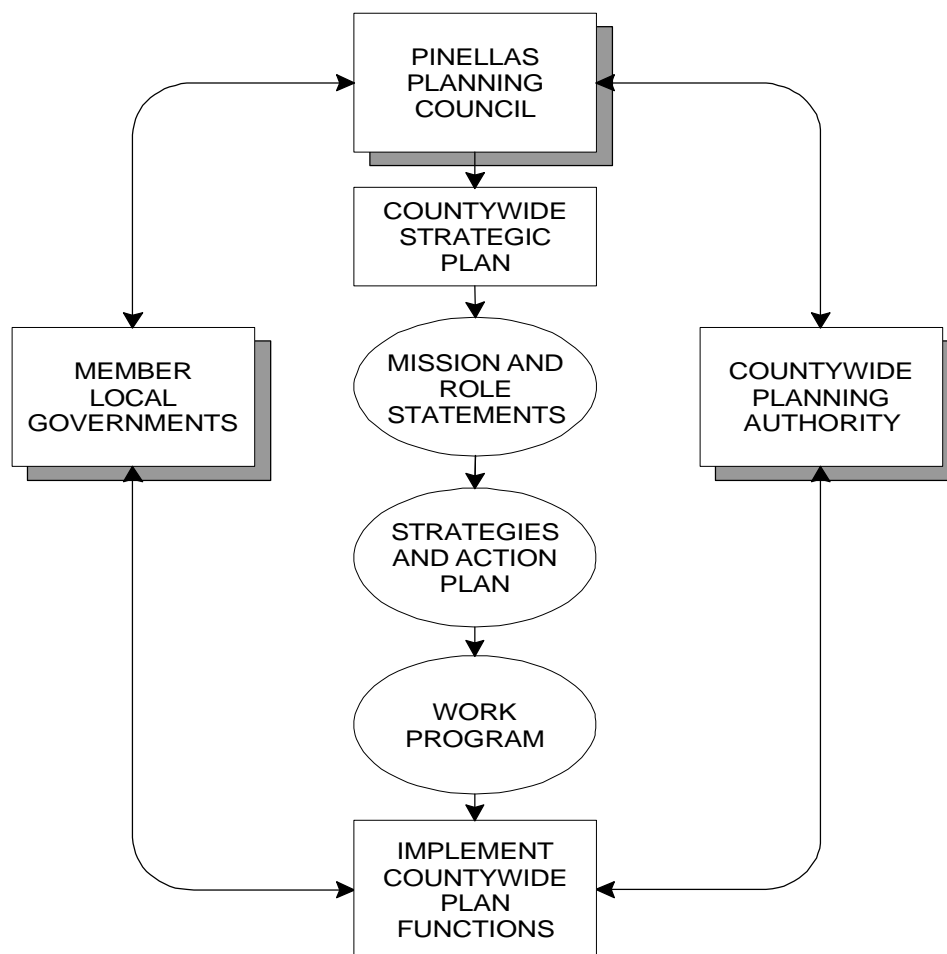
## **PINELLAS PLANNING COUNCIL AND THE COUNTYWIDE PLANNING PROCESS**

---

The countywide planning process, based upon a special act of the State Legislature (Chapter 88-464, Laws of Florida, as amended) and approved by referendum as an amendment to the Pinellas County Charter, was established to guide the growth and improvement of Pinellas County as a whole, with the participation of the County's member local governments and the School Board.

The Pinellas Planning Council (PPC) is comprised of thirteen elected officials who provide representation for each of the 25 local governments within Pinellas County and the Pinellas County School District. The PPC serves in an advisory role to the Countywide Planning Authority for the purpose of formulating and administering a coherent countywide planning process that overcomes the inherent limitations of 25 separate local government plans, while respecting the prerogatives and individual character of each local government as set forth in their local plans.

The Countywide Plan and accompanying Rules have been adopted to assist in the countywide planning process. The following depicts the organizational framework of the strategic planning process that is used to formulate and administer the Countywide Plan and Rules:



## **THE COUNTYWIDE PLANNING AUTHORITY**

---

The Pinellas County Board of County Commissioners serves as the Countywide Planning Authority (CPA) for Pinellas County as provided for in the Special Act and the County Charter. The five elected county commissioners, in their capacity as the CPA, serve as the final decision-maker in the adoption and administration of the Countywide Plan.

During the 1998-1999 Fiscal Year, the CPA acted on 299 amendments to the Countywide Future Land Use Plan Map and comprehensively updated the Countywide Plan Rules in accordance with the five-year schedule of mandatory updates.

The CPA, in conjunction with the PPC, oversees the current planning effort so as to administer a coherent countywide planning process for the overall benefit of Pinellas County.

County Commissioner Karen Williams Seel served as the Pinellas County representative on the PPC for the past year and was an effective liaison between the PPC and the CPA, including actively participating in the development of the PPC's new five-year work-program based on the Strategic Plan developed during this past fiscal year.

### **THE CPA**



Commissioner Sallie Parks, Chairman (seated center)  
Commissioner Robert B. Stewart, Vice-Chairman (seated right)  
Commissioner Calvin Harris (standing left)  
Commissioner Karen Williams Seel (standing right)  
Commissioner Barbara Sheen Todd (seated left)

## **THE PLANNERS ADVISORY COMMITTEE**

---

The Planners Advisory Committee (PAC) provides technical input and makes recommendations on matters before the Council. The PAC is comprised of the directors of the various local government planning departments, or other selected representatives, and meets with Council staff on a regular basis to review items being brought to the Council. The PAC is an additional source of professional input to the Council's decision-making process.

A major part of the PAC effort includes the review of: (1) land use plan amendments to maintain consistency with the Countywide Plan; (2) amendments to the Countywide Plan Rules; and (3) special work program items such as the annexation legislation being prepared for consideration to improve the way annexation occurs in Pinellas County.

Other special projects that the PAC addressed this year included review of the Council's "Streamlining" report designed to improve the way land use plan amendments are made.

David Goodwin, Manager of the Planning Programs Division for the City of St. Petersburg, and Ron Rinzivillo, Planner for the City of Safety Harbor, served as Chairman and Vice-Chairman respectively, of the PAC during 1999.

### **THE PAC**



Seated from left to right - Jeff Dow, Dunedin; Mike Nadeau, Indian Shores; Dave Goodwin, St. Petersburg; Walter Fufidio, Tarpon Springs.

Standing from left to right - Wayne Wells, Pinellas Park; Ron Rinzivillo, Safety Harbor; Gordon Beardslee, Pinellas County; Jim Miller, Pinellas County School District; Rick Goss, Largo; Nick Staszko, Oldsmar; Cindi Harden, Clearwater; Mitch Bobowski, Seminole; Richard Kephart, Gulfport.

# **PINELLAS PLANNING COUNCIL**

## **FUNCTIONS AND ACCOMPLISHMENTS**

The countywide planning program, as administered by the PPC, is designed to promote a consistent, coordinated, and efficient countywide approach to planning and development in Pinellas County with local, regional, and state government entities.

Throughout the past year, the Council has assisted local governments and developed numerous programs that furthered the countywide planning program. The 1998-1999 fiscal year activities were organized around four major functions as described below.

**Intergovernmental Coordination** - This Council function is intended to further the objectives of the Countywide Plan through coordination with individual local governments and agencies involved with planning activities within and outside of Pinellas County. A countywide approach to planning issues, such as the formulation and implementation of the Model Local Intergovernmental Coordination Element, is emphasized in order to facilitate coordination and foster governmental efficiencies. Key duties and accomplishments include:

- Preparation of a Model Local Intergovernmental Coordination Element (ICE) as a resource for all 25 local governments in Pinellas County. The Model ICE provided local governments with a template to assist in the completion of their ICE requirements and provided a meaningful tool to improve intergovernmental coordination among local governments;
- Assisting eleven local governments in updating their ICEs with the use of the Model;
- Coordination of local planning needs, review of land development codes and comprehensive plan policies to help implement the Indian Shores Town Square Plan; and
- Initiation of a white paper report, Religious Institutions and Local Land Use Controls, which is being developed to serve as a guide for local governments in the administration and regulation of religious institutions within Pinellas County.

### **MODEL ICE RECOGNIZED WITH AWARD OF EXCELLENCE**



Chairman Kersteen displaying the Suncoast APA Award of Excellence with Vice-Mayor Bob Jackson, Vice-Mayor William Smith, Mayor Thomas DeCesare, Commissioner Ed Hart, Commissioner Nadine Nickeson, Mayor Frank DiDonato, and Commissioner Janet Henderson.

## **PINELLAS PLANNING COUNCIL**

---

---

### **FUNCTIONS AND ACCOMPLISHMENTS (CONTINUED)**

**Land Use** - This Council function is mainly involved in implementing, monitoring, and updating the Countywide Future Land Use Plan, and includes the following primary items:

- Coordinating all Countywide Future Land Use Plan map amendments. From October, 1998, through September, 1999, the PPC processed 54 separate requests resulting in 299 amendments to the Countywide Plan Map;
- Maintaining the Countywide Plan and Rules, including adoption of the Rule amendments addressing thresholds for institutional uses and expanded provision for personal service uses;
- Finalizing special studies that included the Indian Rocks Road Corridor Study for the City of Belleair Bluffs to determine the appropriate plan and zoning classifications along the corridor; and
- Provision of local government mapping assistance under an agreement with the Pinellas County Property Appraiser's Office. This provides mapping services, including future land use plan, zoning and special area maps, requested by local governments.

**Local Assistance** - This function involves a variety of planning services provided to municipalities in the county, including six communities which have executed interlocal agreements with the Council to assist them in updating their comprehensive plans consistent with the Evaluation and Appraisal Report process, as well as for continuing technical assistance. Key items include:

- Developing and processing the Evaluation and Appraisal Report-based comprehensive plan amendments for the six contract local governments. This plan update provides the communities with revised plan goals, objectives, and policies developed by using an extensive public participation process as well as the required coordination with the State Department of Community Affairs;
- Providing on-going assistance, including site plan review, variance, plan and code interpretation, as well as the requisite coordination with state and regional agencies;
- Initiating a study for the contract municipalities which compares the newly adopted comprehensive plans to existing land development regulations. The purpose of the study is to determine the level of consistency between the two documents and ultimately to bring the plan and regulations into conformance;
- Preparation of a special feasibility study for a potential annexation into Madeira Beach; and
- Preparation of a P-2000 grant application to obtain beachfront property in Treasure Island that is intended to be used as a park.

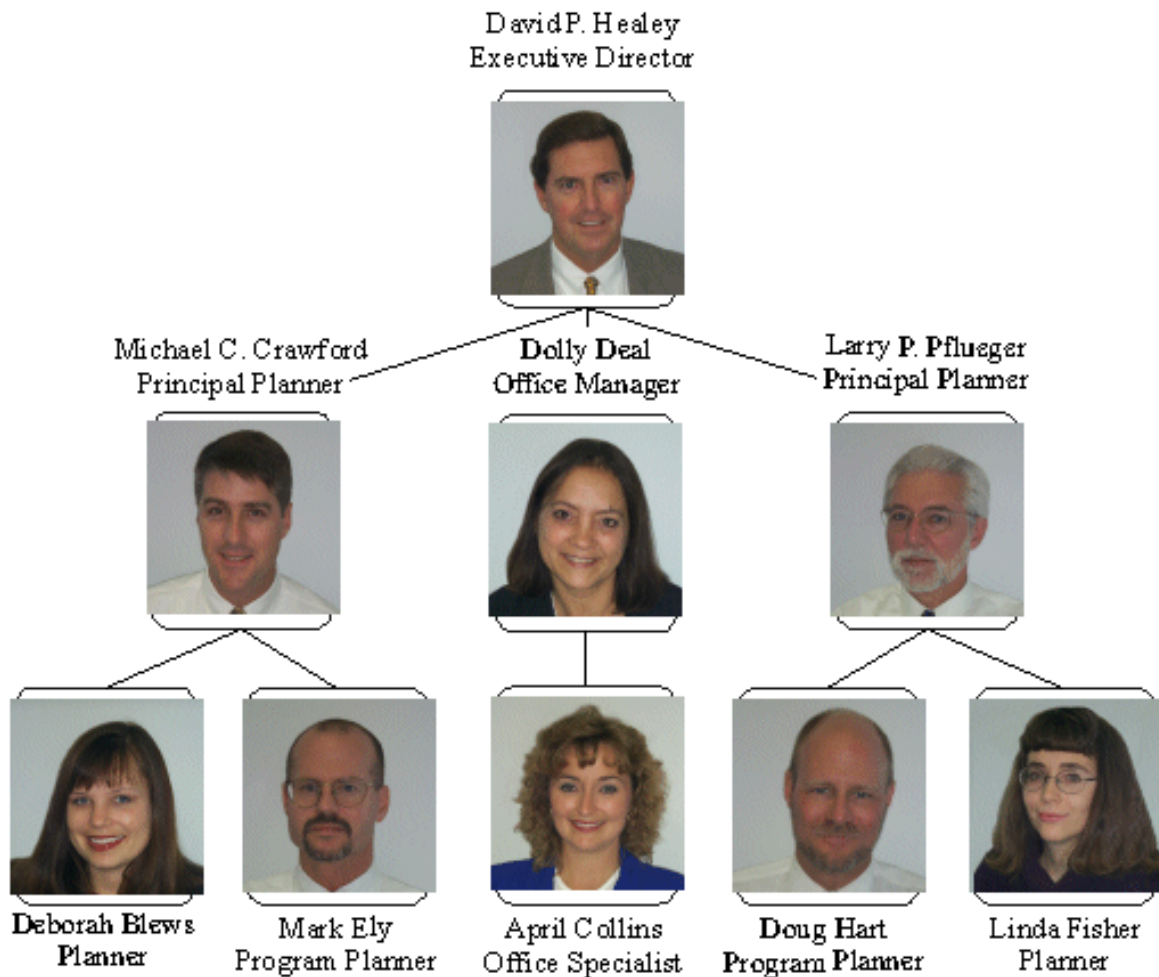
# **PINELLAS PLANNING COUNCIL**

## **FUNCTIONS AND ACCOMPLISHMENTS (CONTINUED)**

**Administration** - Key items related to this Council function include:

- Overseeing the day-to-day operations of the Council, including personnel, budget, financial and audit functions, as well as the personal computer network;
- Preparation and coordination of the Council, Planners Advisory Committee, and Countywide Planning Authority notices, agendas, and public meeting requirements;
- Initiation and coordination of a strategic planning exercise to update the Council's Mission and Role Statements, and the Annual and Five-Year Work Programs; and
- Coordination of the Council's efforts with the member local governments and the Countywide Planning Authority.

### **THE PINELLAS PLANNING COUNCIL'S STAFF**



## 1998-1999 YEAR-END FINANCIAL STATEMENT

The PPC's operating budget is prepared annually by the Executive Director, reviewed and approved by the PPC, and adopted by the Pinellas County Board of County Commissioners. Copies of the proposed and adopted budget are forwarded to each local government. The budget is funded by an ad valorem tax based on a millage rate applied countywide. The 1998-99 fiscal year millage rate was .0225. The 1998-99 year-end general purpose financial statement is shown below:

	<u>General Fund</u>	
	<u>1999</u>	<u>1998</u>
REVENUE:		
Pinellas County property taxes	\$728,842	\$696,253
Interest	23,600	22,222
Contract services	<u>54,389</u>	<u>83,161</u>
Total revenue	<u>806,831</u>	<u>801,906</u>
EXPENDITURES:		
Payroll, taxes, and benefits	513,544	523,227
Contractual support services	50,960	72,216
Legal services	225	184
Rent	56,909	41,370
Equipment and furnishings	25,159	10,627
Telephone	5,300	7,886
Mail	6,656	5,376
Advertising notice	4,339	3,365
Printing and reproduction	13,174	9,997
Office supplies and materials	7,698	7,114
Property appraiser and tax collector commissions	22,318	21,785
Travel	3,484	4,518
Reference and education	5,750	5,805
Accounting and audit	5,442	5,294
Local government grants	10,000	22,000
Miscellaneous	<u>3,378</u>	<u>1,398</u>
Total expenditures	<u>734,336</u>	<u>742,162</u>
REVENUES OVER (UNDER) EXPENDITURES	72,495	59,744
FUND BALANCE, OCTOBER 1	<u>289,125</u>	<u>229,381</u>

## **THE YEAR IN REVIEW AND A LOOK AHEAD TO 2000**

The accomplishments of the Council during 1998-1999 reflect a busy and productive year. The tasks outlined in last year's work program were carried-out essentially as contemplated. Principal accomplishments include:

- Preparation and Approval of a Strategic Plan That Will Guide the Role and Work Program of the Council Over the Next Five Years;
- Successful Completion of Local Plan Updates for Six Local Governments and Provision of Significant Local Technical Assistance, Meeting the Varied Planning Needs of the Smaller Local Governments;
- Recommendations to Streamline the Plan Map Amendment Process and Establish a More Comprehensive Approach to Annexation; and
- Finalizing the Model Local Intergovernmental Coordination Element as a Resource for All Local Governments and its Successful Customization for Eleven Local Governments.

As we look ahead to the next year, it will be an equally significant year for the PPC. The Council has approved a new Strategic Plan and Five-Year Work Program. The work to occur in the 1999-2000 fiscal year represents the first of a new five-year cycle that reflects the strategic planning process, including:

- Implementation of Recommendations to Streamline the State and Countywide Level Future Land Use Plan Map Amendment Processes;
- Implementation of the Comprehensive Approach to Annexation Advanced by the Council;
- Preparation of an Updated Countywide Plan to Reflect Current Policies and Priorities; and
- Examination of the Regulatory Issues Related to the Development/Redevelopment Process in an Attempt to Find Ways to Improve the Consistency and Efficiency of These Processes.